



## Mabwysiadu

Canolbarth a Gorllewin Cymru

## Adoption

Mid & West Wales



# CROESO | WELCOME

---

---



**Mabwysiadu**  
Canolbarth a Gorllewin Cymru  
**Adoption**  
Mid & West Wales

# AGENDA

## Interested In Adoption Webinar

**1**

### **Welcome**

- Introductions, Housekeeping, Confidentiality & Safeguarding
- About Adoption Mid & West Wales

**2**

### **Children**

- Why do children need to be adopted?
- What challenges might adopted children face?

**3**

### **Adopters**

- Who can adopt a child?
- Do you need any special skills or knowledge?

**4**

### **Assessment & Matching**

- What does the assessment entail?
- What things are considered when finding a match?

**5**

### **Meet Our Adopters**

- What does the assessment entail?
- What things are considered when finding a match?

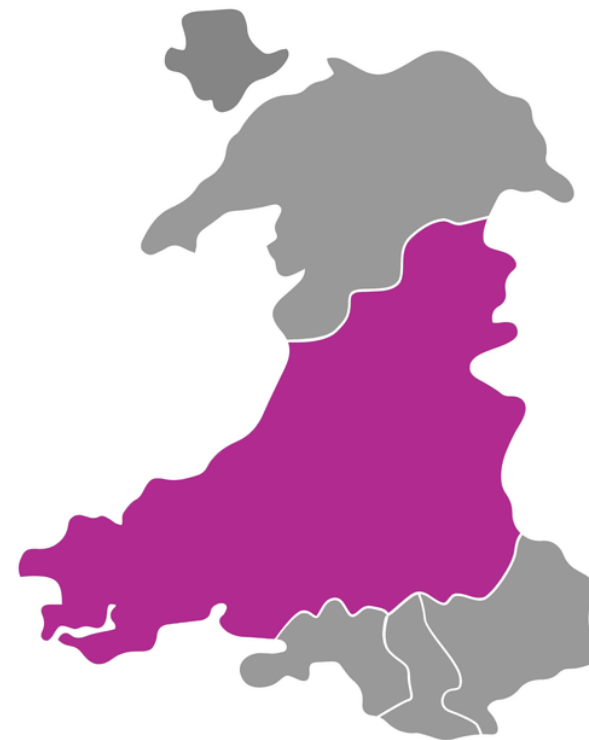


# ABOUT US

Adoption Mid and West Wales is the official adoption service for the local councils in Carmarthenshire, Powys, Pembrokeshire, and Ceredigion.

This means we work directly with each council's children's services, helping find safe, loving homes for children.

Because we are part of the local authority, we are closely involved in the children's care planning for adoption from the very beginning. This enables us to have a deep understanding of each child and the best possible match for them. We provide ongoing support before, during, and after adoption.



# AMDANOM NI

Mabwysiadu Canolbarth a Gorllewin Cymru yw'r gwasanaeth mabwysiadu swyddogol ar gyfer cynghorau lleol Sir Gaerfyrddin, Powys, Sir Benfro a Cheredigion.

Mae hyn yn golygu ein bod yn gweithio'n uniongyrchol gyda gwasanaethau plant pob cyngor, gan helpu i ddod o hyd i gartrefi diogel a chariadus i blant.

Gan ein bod ni'n rhan o'r awdurdod lleol, rydyn ni'n ymwneud yn agos â chynllunio gofal plant ar gyfer mabwysiadu o'r cychwyn cyntaf. Mae hyn yn ein galluogi i gael dealltwriaeth ddofn o bob plentyn a'r cyfatebiaeth orau posibl iddynt. Rydym yn darparu cymorth parhaus cyn, yn ystod, ac ar ôl mabwysiadu.

---

# Ein Tîm Our Team

---



**Mabwysiadu**  
Canolbarth a Gorllewin Cymru  
**Adoption**  
Mid & West Wales



# The Children

Why do children need to be adopted?

Do they have different needs to children that haven't been Looked After?

Social workers and courts will always try to keep children with their birth families if it is safe to do so, but when this isn't possible, adoption provides a secure, loving, and permanent home.

In the past, many adoptions happened because of societal pressure on women in certain circumstances to give up their babies, but today adoptions mostly involve children who have been removed from unsafe situations, rather than babies being voluntarily placed for adoption.



# Plant

Bydd gweithwyr cymdeithasol a llysoedd bob amser yn ceisio cadw plant gyda'u teuluoedd biolegol os yw'n ddiogel gwneud hynny, ond pan nad yw hyn yn bosibl, mae mabwysiadu'n darparu cartref diogel, cariadus a pharhaol.

Yn y gorffennol, digwyddodd llawer o fabwysladau oherwydd pwysau cymdeithasol ar fenywod mewn rhai amgylchiadau i roi'r gorau i'w babanod, ond heddiw mae mabwysladau yn ymwneud yn bennaf â phlant sydd wedi'u tynnu o sefyllfaoedd anniogel, yn hytrach na babanod yn cael eu lleoli'n wirfoddol i'w mabwysiadu.

Pam gwneud plant angen eu mabwysiadu?

A oes ganddynt anghenion gwahanol i blant nad ydynt wedi bod yn Derbyngofal?

# MABWYSIADWYR

Pwy all fabwysiadu?

## Gallwch fabwysiadu os ydych yn:

- Yn 21 oed neu drosodd
- Sengl, wedi ysgaru neu mewn perthynas ymroddedig
- Unrhyw gefndir ethnig, crefyddol neu ddiwylliannol
- Unrhyw ryw neu gyfeiriadedd rhywiol
- Mewn llety diogel gydag ystafell i blentyn
- Eisoed yn rhiant, neu beidio
- 6 mis neu fwy o unrhyw driniaeth IVF
- Gweithio, neu ddim yn gweithio

Fel mabwysiadwr, bydd angen i chi fod yn amyneddgar, yn ddeallus ac yn wydn, gan fod llawer o blant wedi cael profiadau cynnar anodd ac angen amser i feithrin ymddiriedaeth. Nid ydym yn chwilio am fabwysiadwr 'perffaith', ond bydd angen i chi fod yn hyblyg ac yn agored i ddysgu, gan fod ystyriaethau unigryw i fagu plant sydd wedi'u mabwysiadu. Byddwn yma i chi bob cam o'r ffordd, yn darparu'r gefnogaeth a'r arweiniad sydd eu hangen arnoch i dyfu mewn hyder, fel y gallwch ddarparu'r cartref cariadus, sefydlog a meithringar y mae plentyn ei angen.



# ADOPTERS

Who can adopt?

## You can adopt if you are:

- Aged 21 or over
- Single, divorced or in a committed relationship
- Any ethnic, religious or cultural background
- Any gender or sexual orientation
- In secure accommodation with a room for a child
- Already a parent, or not
- 6 months or more from any IVF treatment
- Working, or not working

As an adopter, you will need to be patient, understanding, and resilient, as many children have had difficult early experiences and need time to build trust. We are not looking for a 'perfect' adopter, but you will need to be adaptable and open to learning, as parenting an adopted child comes with unique considerations. We will be here for you every step of the way, providing the support and guidance you need to grow in confidence, so you can provide the loving, stable, and nurturing home that a child needs.

# ASESIAD | ASSESSMENT

Beth mae'n ei olygu? | What does it involve?

## Ymholiad

- Registration of interest
- Initial Visit



## Stage 1

- Preparation Training
- References
- Agency Checks



## Stage 2

- Home Visits
- Lifestyle Checks
- PAR Completed



## Approval

- Adoption Panel
- Ratification



## Enquiry

- Registration of interest
- Initial Visit

## Stage 1

- Preparation Training
- References
- Agency Checks

## Stage 2

- Home Visits
- Lifestyle Checks
- PAR Completed

## Approval

- Adoption Panel
- Ratification



# PARU

Beth sy'n digwydd nesaf?

Waiting for a Match

We carefully consider for whom you could be the best match for a child or sibling group. If a match isn't found within 6 months, your details may be added to the Wales Adoption Register, to explore matches outside our service area.

Matching & Introductions

Once a match is found, you'll receive information about the child(ren). If everyone involved agrees to move forward, planning begins for introductions, starting with a sighting and gradually building up to the child(ren) moving in with you.

Placement & Support

After the child(ren) move in, regular visits will help ensure everyone is settling in well. Support is available to you every step of the way.

Legal Adoption

After at least 10 weeks, you can apply for an Adoption Order to make it official! Your Social Worker will guide you through the process and provide a report to the Court as part of the application.

# MATCHING

What happens next?

Waiting for a Match

We carefully consider for whom you could be the best match for a child or sibling group. If a match isn't found within 6 months, your details may be added to the Wales Adoption Register, to explore matches outside our service area.

Matching & Introductions

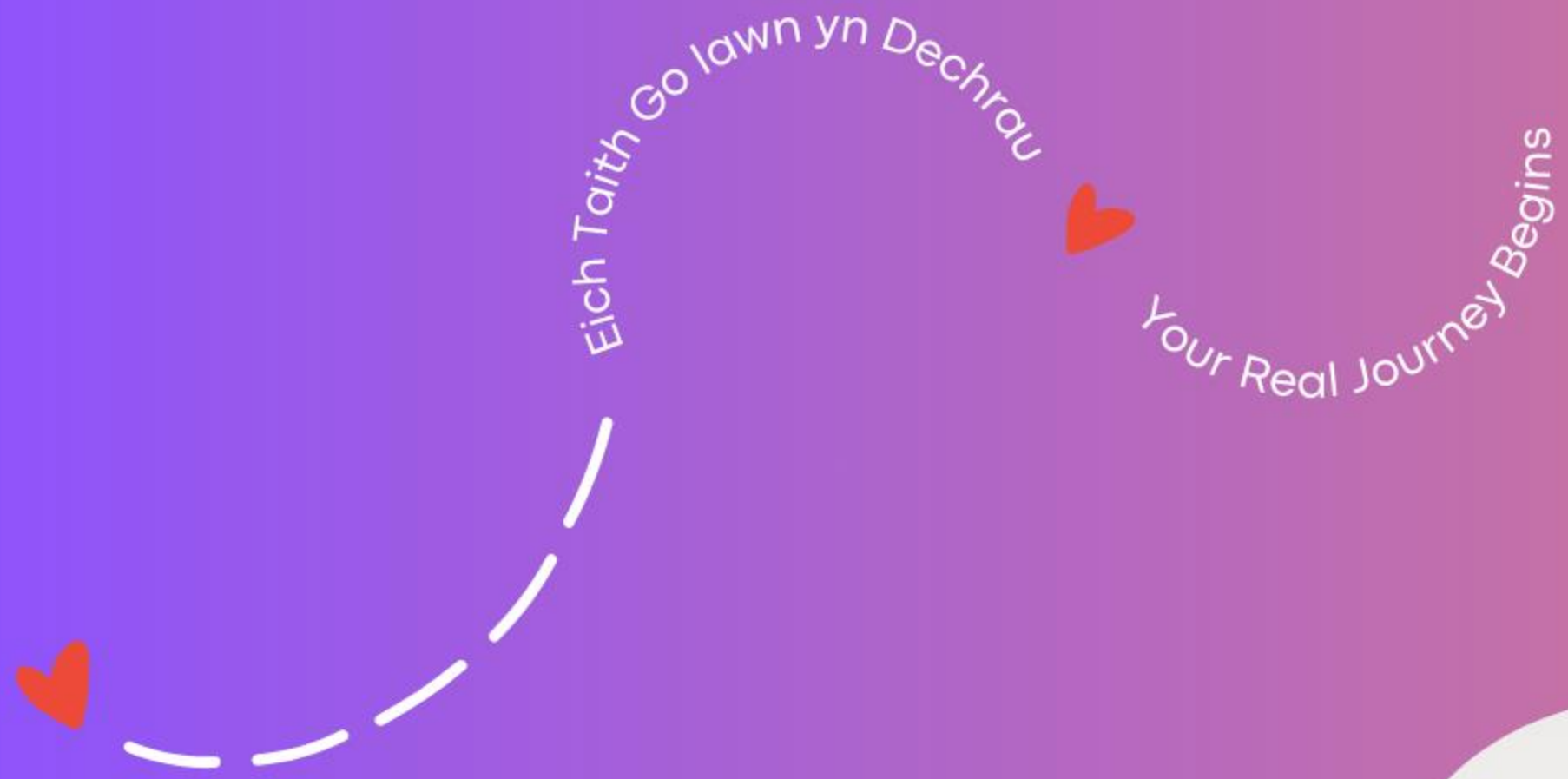
Once a match is found, you'll receive information about the child(ren). If everyone involved agrees to move forward, planning begins for introductions, starting with a sighting and gradually building up to the child(ren) moving in with you.

Placement & Support

After the child(ren) move in, regular visits will help ensure everyone is settling in well. Support is available to you every step of the way.

Legal Adoption

After at least 10 weeks, you can apply for an Adoption Order to make it official! Your Social Worker will guide you through the process and provide a report to the Court as part of the application.



Mae teuluoedd mabwysiadol yn ein rhanbarth yn cael cymorth parhaus i lywio heriau unigryw rhianta mabwysiadol. Gyda mynediad at hyfforddiant parhaus a seicolegwyr mewnol, byddwch yn derbyn cyngor arbenigol a gwasanaethau wedi'u teilwra. Rydym yn cael y wybodaeth ddiweddaraf am y dulliau therapiwtig diweddaraf, gan gynnig arweiniad ymarferol ar waith taith bywyd, ymlyniad, rhianta PACE, a chefnogi datblygiad sensorimotor plant.

Adoptive families in our region receive ongoing support to navigate the unique challenges of adoptive parenting. With access to ongoing training and in-house psychologists, you'll receive specialist advice and tailored services. We stay up to date with the latest therapeutic approaches, offering practical guidance on life journey work, attachment, PACE parenting, and supporting children's sensorimotor development.

